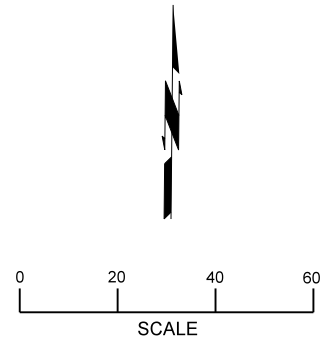
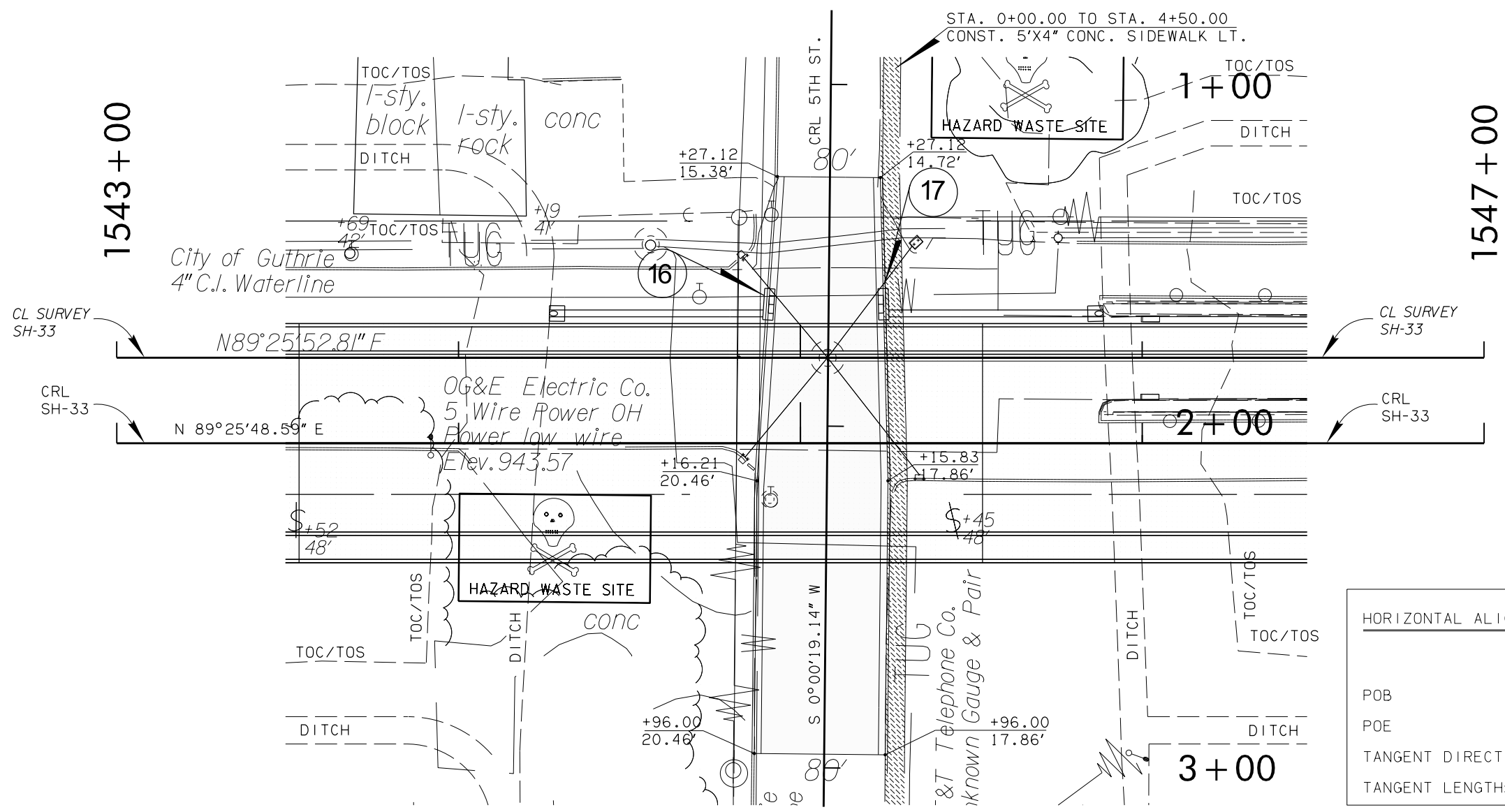


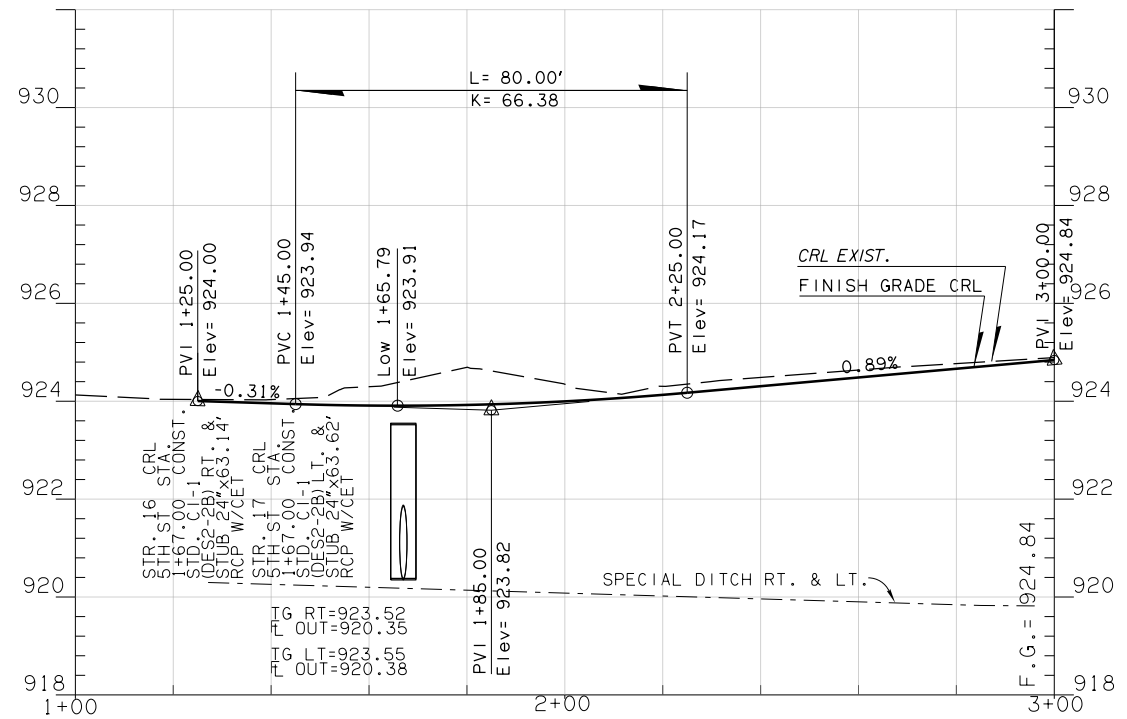
FED. ROAD DIST. NO.	STATE	JOB PIECE NO.	FISCAL YEAR	SHEET NO.	TOTAL SHEETS
6	OKLA.				
DESCRIPTION		REVISIONS		DATE	



HORIZONTAL ALIGNMENT: 5TH STREET

	STATION	EASTING	NORTHING
POB	00+0.00	2136895.6746	321042.7976
POE	5+59.90	2136895.6227	320482.8925
TANGENT DIRECTION:	S 0°00'19.14" W		
TANGENT LENGTH:	559.91		

NOTE: STATIONS AND OFFSETS ARE TO FACE OF CURB & BASED ON 5TH ST. ALIGNMENT



NOTE: FOR ADDITIONAL SURVEY INFORMATION, SEE SURVEY DATA SHEETS

DESIGN		OKLAHOMA DEPARTMENT OF TRANSPORTATION ROADWAY DESIGN DIVISION <b>GEOMETRIC DETAIL</b> <b>FIFTH STREET</b> STATE JOB NO. 21860(04) SHEET NO. R009 LOGAN CO. SH-33
DRAWN	LL	
CHECKED		
APPROVED		
SQUAD	GREEN	